

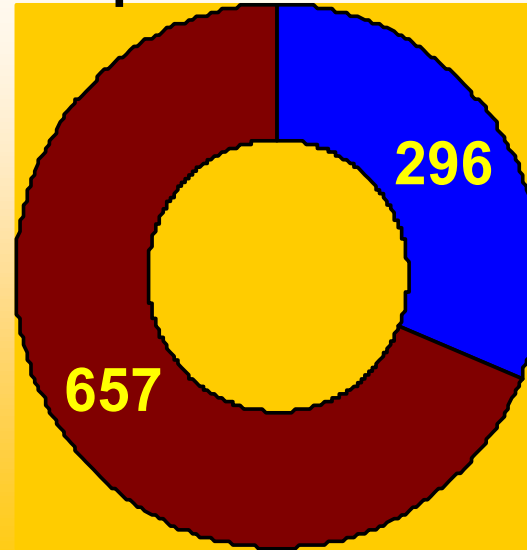
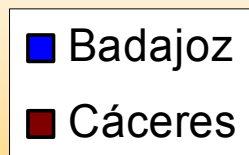
The background of the slide is a faded, sepia-toned image of a bullfight. It shows a bull in the foreground, partially obscured by the text, and a matador in the background, likely in the process of a pass. The overall tone is historical and dramatic.

***BALANCE DE LA  
TEMPORADA TAURINA EN  
EXTREMADURA  
2006***

## ESPECTÁCULOS TAURINOS EN EXTREMADURA AÑO 2006

| CLASE DE ESPECTÁCULO              | BADAJOS    | CACERES    | TOTAL<br>COMUNIDAD |
|-----------------------------------|------------|------------|--------------------|
| CORRIDAS DE TOROS                 | 29         | 9          | 38                 |
| NOVILLADAS CON PICADORES          | 7          | 13         | 20                 |
| NOVILLADAS SIN PICADORES          | 19         | 8          | 27                 |
| REJONEO                           | 31         | 29         | 60                 |
| BECERRADAS                        | 18         | 8          | 26                 |
| FESTIVALES                        | 13         | 18         | 31                 |
| TOREO COMICO                      | 13         | 11         | 24                 |
| ESPECTÁCULOS O FESTEJOS POPULARES | 166        | 492        | 658                |
| ENCIERROS                         | 0          | 69         | 69                 |
| <b>TOTALES</b>                    | <b>296</b> | <b>657</b> | <b>953</b>         |

## Espectáculos y festejos taurinos por provincia



# ESPECTÁCULOS TAURINOS

NÚMERO DE LOCALIDADES EN LAS QUE SE HAN CELEBRADO ESPECTÁCULOS TAURINOS EN EXTREMADURA

DURANTE LOS AÑOS 2005 Y 2006

| <b>PROVINCIA</b> | <b>AÑO 2005</b> | <b>AÑO 2006</b> | <b>DIFERENCIA</b> |
|------------------|-----------------|-----------------|-------------------|
| CÁCERES          | 138             | 143             | <b>+ 5</b>        |
| BADAJ OZ         | 94              | 104             | <b>+ 10</b>       |
| <b>TOTALES</b>   | <b>232</b>      | <b>247</b>      | <b>+ 15</b>       |

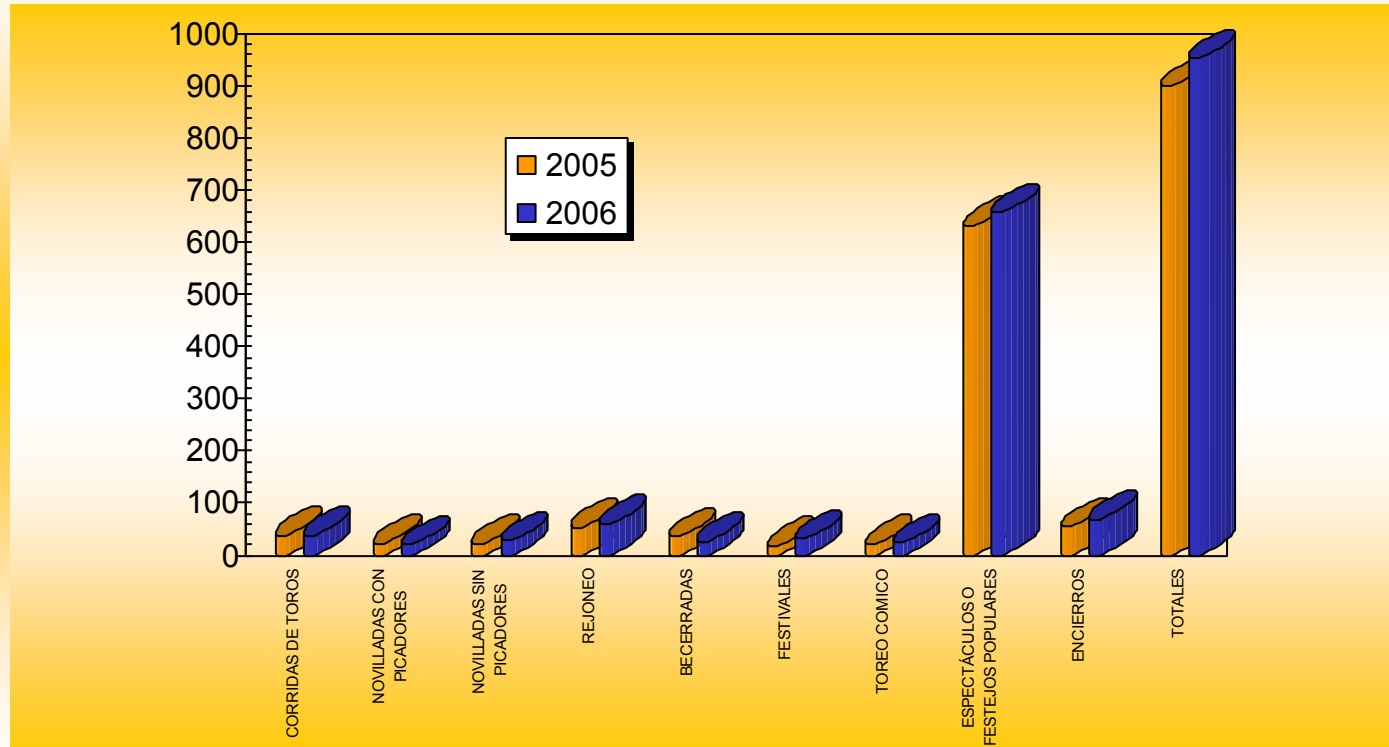
## ESPECTÁCULOS TAURINOS EN EXTREMADURA AÑOS 2005 Y 2006

| CLASE DE ESPECTÁCULO                     | BADAJOZ    |            | CÁCERES    |            | TOTAL      |            | VARIACIÓN   |
|------------------------------------------|------------|------------|------------|------------|------------|------------|-------------|
|                                          | 2005       | 2006       | 2005       | 2006       | 2005       | 2006       | (%)         |
| <b>CORRIDAS DE TOROS</b>                 | 31         | 29         | 7          | 9          | 38         | 38         | 0           |
| <b>NOVILLADAS CON PICADORES</b>          | 13         | 7          | 10         | 13         | 23         | 20         | -13'04      |
| <b>NOVILLADAS SIN PICADORES</b>          | 8          | 19         | 15         | 8          | 23         | 27         | 17'39       |
| <b>REJONEO</b>                           | 22         | 31         | 31         | 29         | 53         | 60         | 13'21       |
| <b>BECERRADAS</b>                        | 24         | 18         | 11         | 8          | 35         | 26         | -25'71      |
| <b>FESTIVALES</b>                        | 5          | 13         | 13         | 18         | 18         | 31         | 94'44       |
| <b>TOREO COMICO</b>                      | 9          | 13         | 13         | 11         | 22         | 24         | 9'09        |
| <b>ESPECTÁCULOS O FESTEJOS POPULARES</b> | 162        | 166        | 470        | 492        | 632        | 658        | 4'11        |
| <b>ENCIERROS</b>                         | 0          | 0          | 55         | 69         | 55         | 69         | 25'45       |
| <b>TOTALES</b>                           | <b>274</b> | <b>296</b> | <b>625</b> | <b>657</b> | <b>899</b> | <b>953</b> | <b>6'01</b> |

## VARIACIONES ENTRE LOS PERIODOS (2004-2005) Y (2005-2006)

| CLASE DE ESPECTÁCULO                     | TOTALES EN %  |               |
|------------------------------------------|---------------|---------------|
|                                          | 2004 - 2005   | 2005 - 2006   |
| <b>CORRIDAS DE TOROS</b>                 | <b>-13,64</b> | <b>0</b>      |
| <b>NOVILLADAS CON PICADORES</b>          | <b>27,78</b>  | <b>-13,04</b> |
| <b>NOVILLADAS SIN PICADORES</b>          | <b>53,33</b>  | <b>17,39</b>  |
| <b>REJONEO</b>                           | <b>12,77</b>  | <b>13,21</b>  |
| <b>BECERRADAS</b>                        | <b>-30,00</b> | <b>-25,71</b> |
| <b>FESTIVALES</b>                        | <b>20,00</b>  | <b>94,44</b>  |
| <b>TOREO COMICO</b>                      | <b>-38,89</b> | <b>9,09</b>   |
| <b>ESPECTÁCULOS O FESTEJOS POPULARES</b> | <b>0,48</b>   | <b>4,11</b>   |
| <b>ENCIERROS</b>                         | <b>44,74</b>  | <b>25,45</b>  |
| <b>TOTALES</b>                           | <b>0,78</b>   | <b>6,01</b>   |

## COMPARATIVA 2005-2006

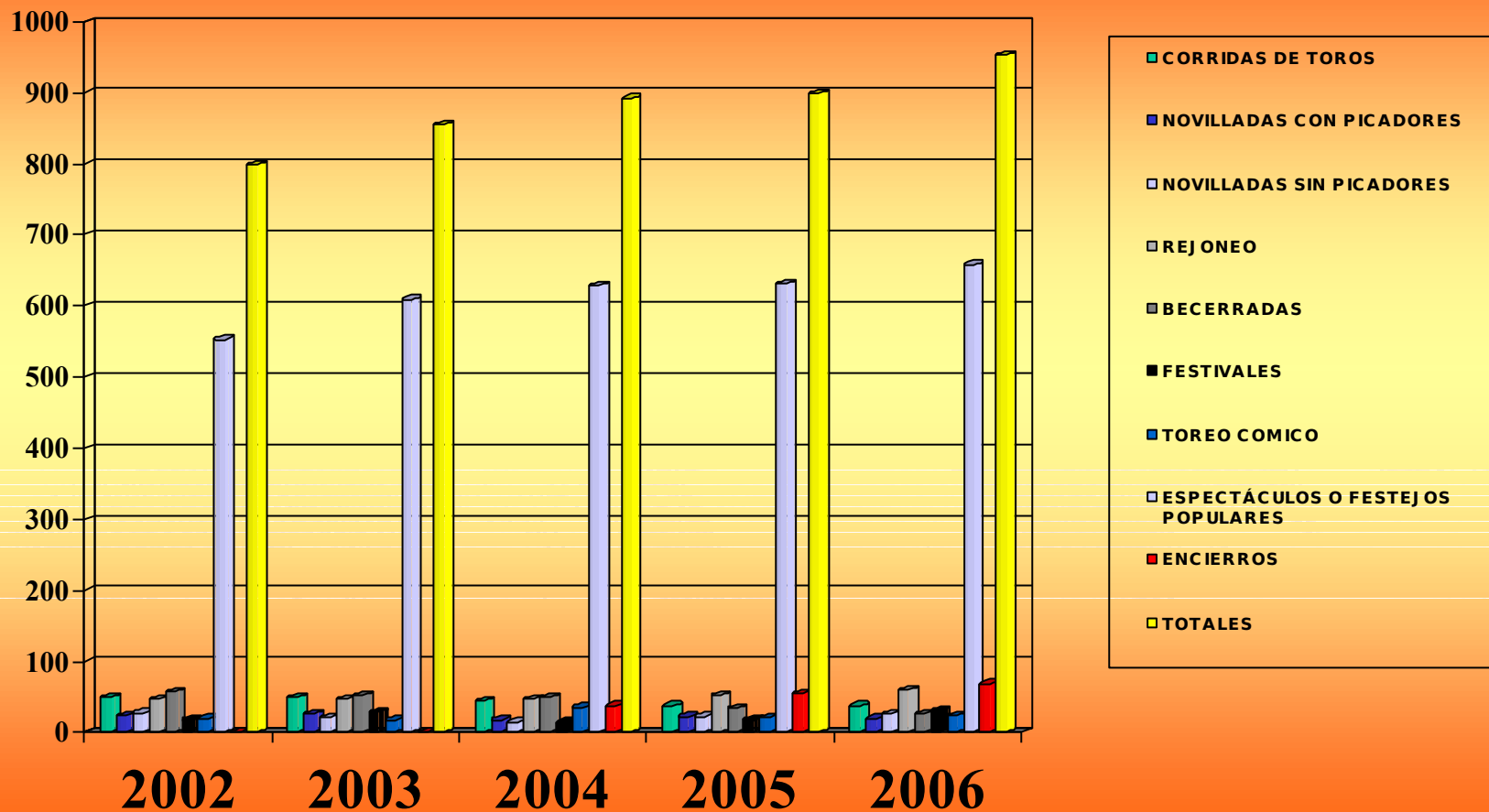


**ESPECTÁCULOS TAURINOS POR AÑOS. (PERIODO 1996-2006)**

| <b>CLASE DE ESPECTÁCULO</b>               | <b>1996</b> | <b>1997</b> | <b>1998</b> | <b>1999</b> | <b>2000</b> | <b>2001</b> | <b>2002</b> | <b>2003</b> | <b>2004</b> | <b>2005</b> | <b>2006</b> |
|-------------------------------------------|-------------|-------------|-------------|-------------|-------------|-------------|-------------|-------------|-------------|-------------|-------------|
| <b>CORRIDAS DE TOROS</b>                  | <b>35</b>   | <b>33</b>   | <b>40</b>   | <b>42</b>   | <b>50</b>   | <b>44</b>   | <b>49</b>   | <b>50</b>   | <b>44</b>   | <b>38</b>   | <b>38</b>   |
| <b>NOVILLADAS CON PICADORES</b>           | <b>21</b>   | <b>19</b>   | <b>29</b>   | <b>19</b>   | <b>22</b>   | <b>24</b>   | <b>24</b>   | <b>27</b>   | <b>18</b>   | <b>23</b>   | <b>20</b>   |
| <b>NOVILLADAS SIN PICADORES</b>           | <b>20</b>   | <b>33</b>   | <b>29</b>   | <b>22</b>   | <b>27</b>   | <b>23</b>   | <b>28</b>   | <b>21</b>   | <b>15</b>   | <b>23</b>   | <b>27</b>   |
| <b>REJ ONEO</b>                           | <b>31</b>   | <b>55</b>   | <b>37</b>   | <b>39</b>   | <b>31</b>   | <b>42</b>   | <b>48</b>   | <b>48</b>   | <b>47</b>   | <b>53</b>   | <b>60</b>   |
| <b>BECERRADAS</b>                         | <b>46</b>   | <b>47</b>   | <b>49</b>   | <b>57</b>   | <b>68</b>   | <b>64</b>   | <b>58</b>   | <b>52</b>   | <b>50</b>   | <b>35</b>   | <b>26</b>   |
| <b>FESTIVALES</b>                         | <b>25</b>   | <b>12</b>   | <b>9</b>    | <b>15</b>   | <b>27</b>   | <b>21</b>   | <b>18</b>   | <b>30</b>   | <b>15</b>   | <b>18</b>   | <b>31</b>   |
| <b>TOREO COMICO</b>                       | <b>17</b>   | <b>18</b>   | <b>18</b>   | <b>15</b>   | <b>8</b>    | <b>13</b>   | <b>20</b>   | <b>18</b>   | <b>36</b>   | <b>22</b>   | <b>24</b>   |
| <b>ESPECTÁCULOS O FESTEJ OS POPULARES</b> | <b>408</b>  | <b>437</b>  | <b>502</b>  | <b>621</b>  | <b>584</b>  | <b>553</b>  | <b>553</b>  | <b>609</b>  | <b>629</b>  | <b>632</b>  | <b>658</b>  |
| <b>ENCIERROS</b>                          | <b>0</b>    | <b>0</b>    | <b>33</b>   | <b>0</b>    | <b>0</b>    | <b>0</b>    | <b>0</b>    | <b>0</b>    | <b>38</b>   | <b>55</b>   | <b>69</b>   |
| <b>TOTALES</b>                            | <b>603</b>  | <b>654</b>  | <b>746</b>  | <b>830</b>  | <b>817</b>  | <b>784</b>  | <b>798</b>  | <b>855</b>  | <b>892</b>  | <b>899</b>  | <b>953</b>  |

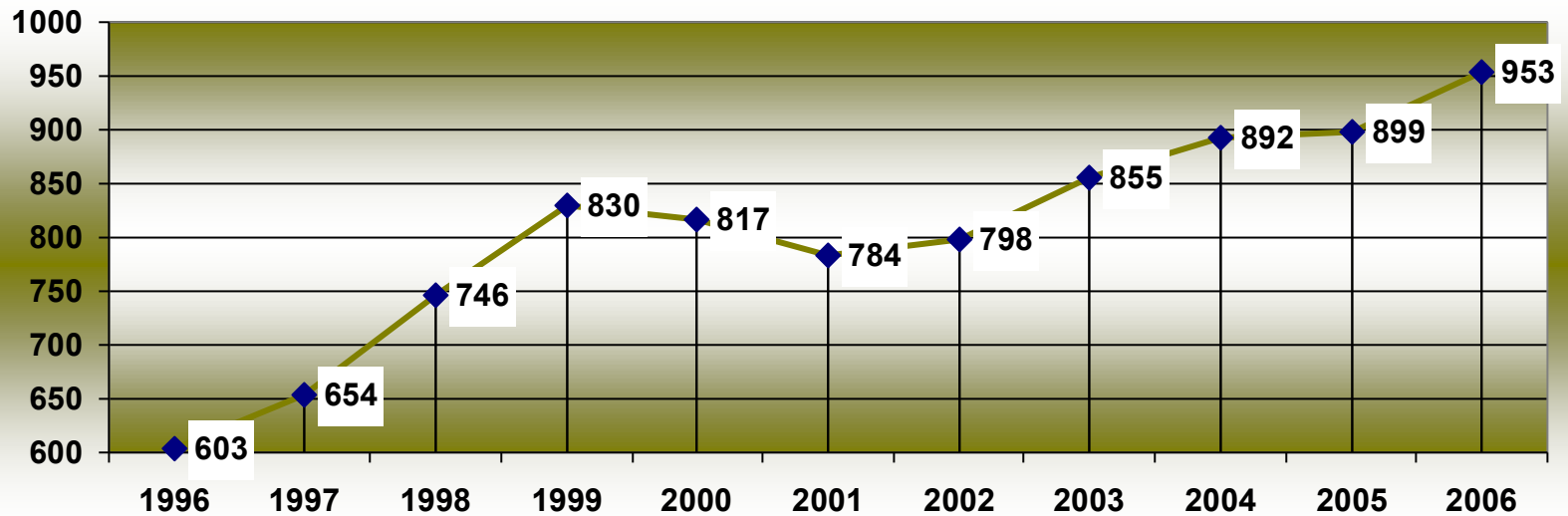


# COMPARATIVA PERIODO (2002-2006)



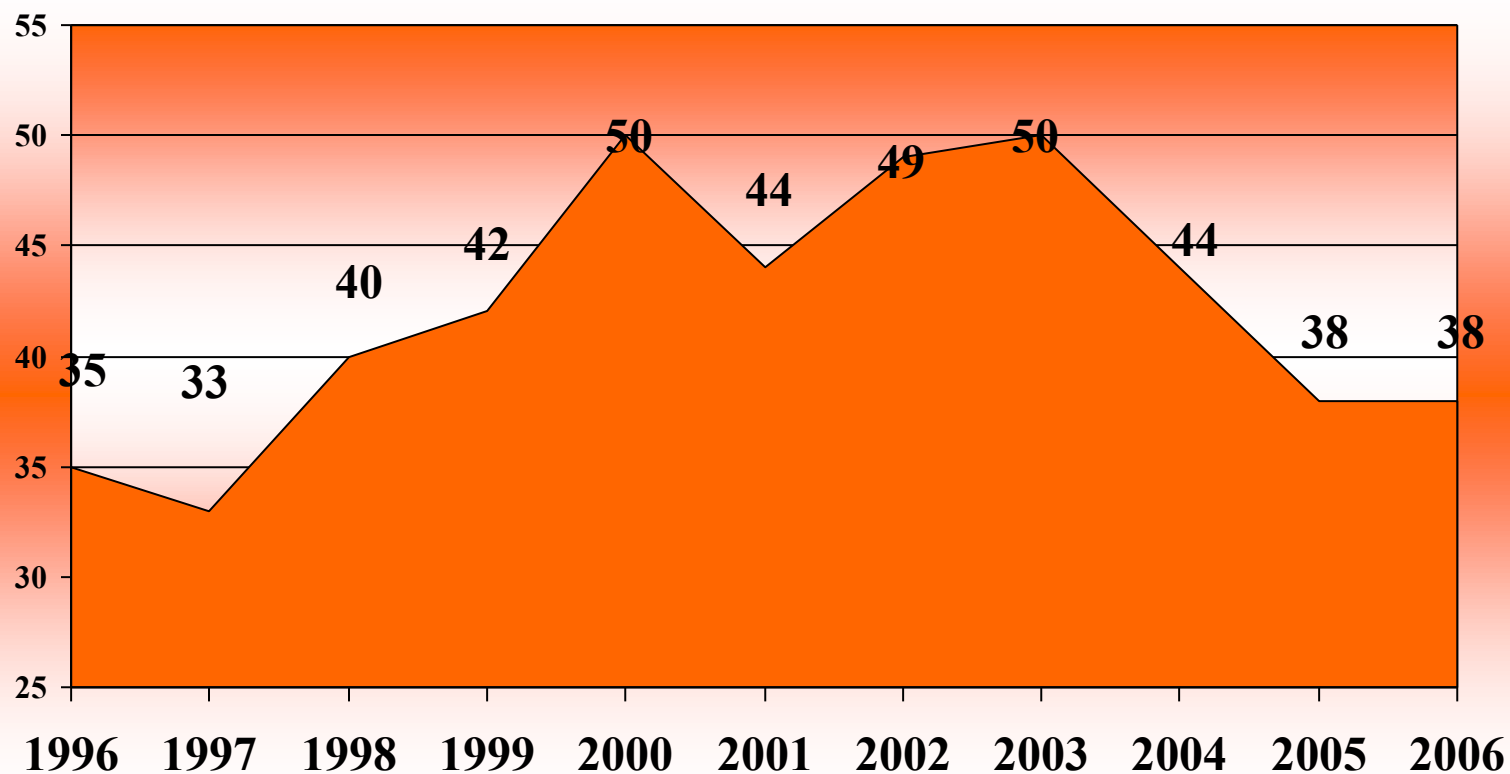
# ESPECTÁCULOS TAURINOS

## PERIODO COMPRENDIDO ENTRE 1996-2006

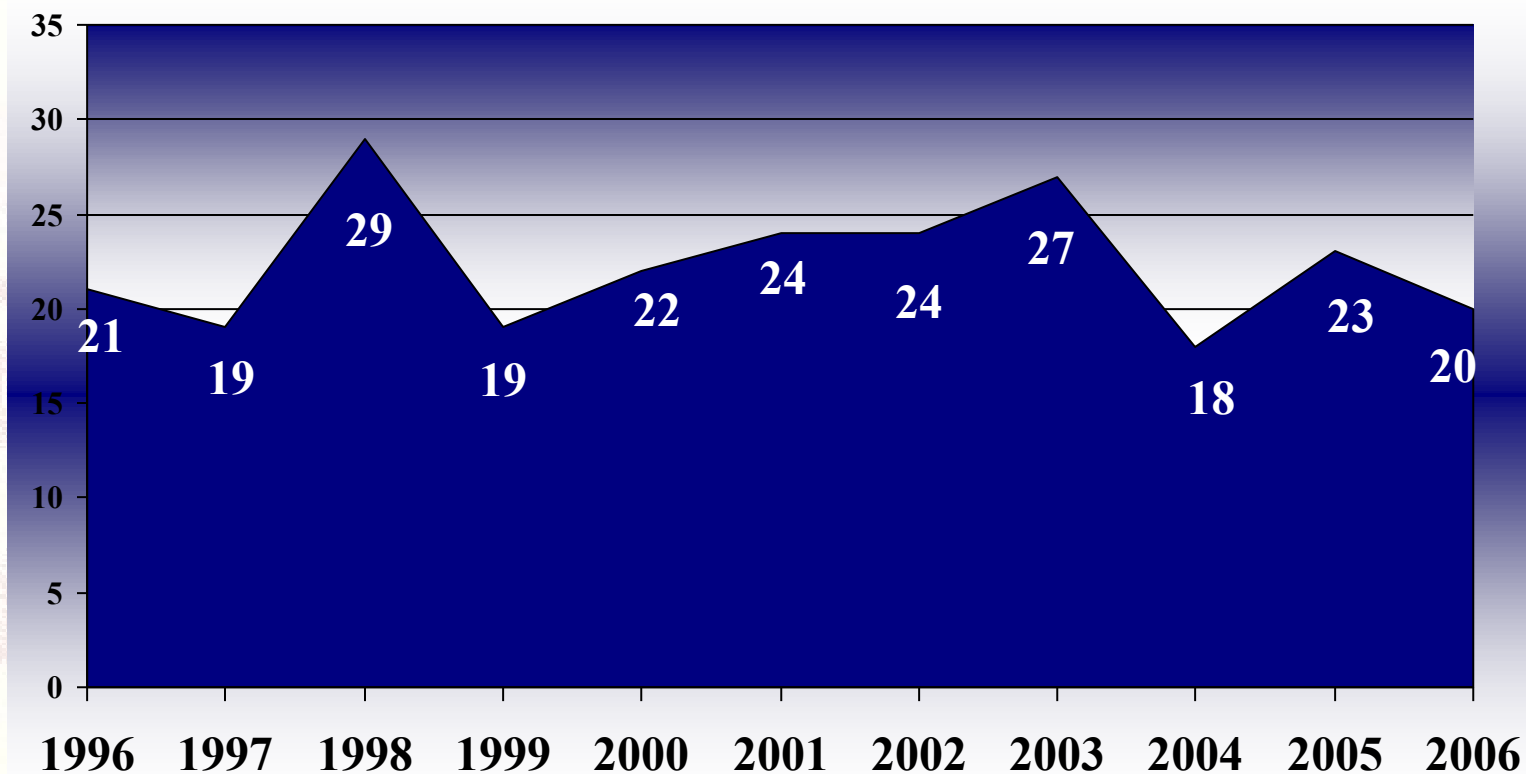


# TENDENCIA PERIODO 1996-2006

## CORRIDAS DE TOROS

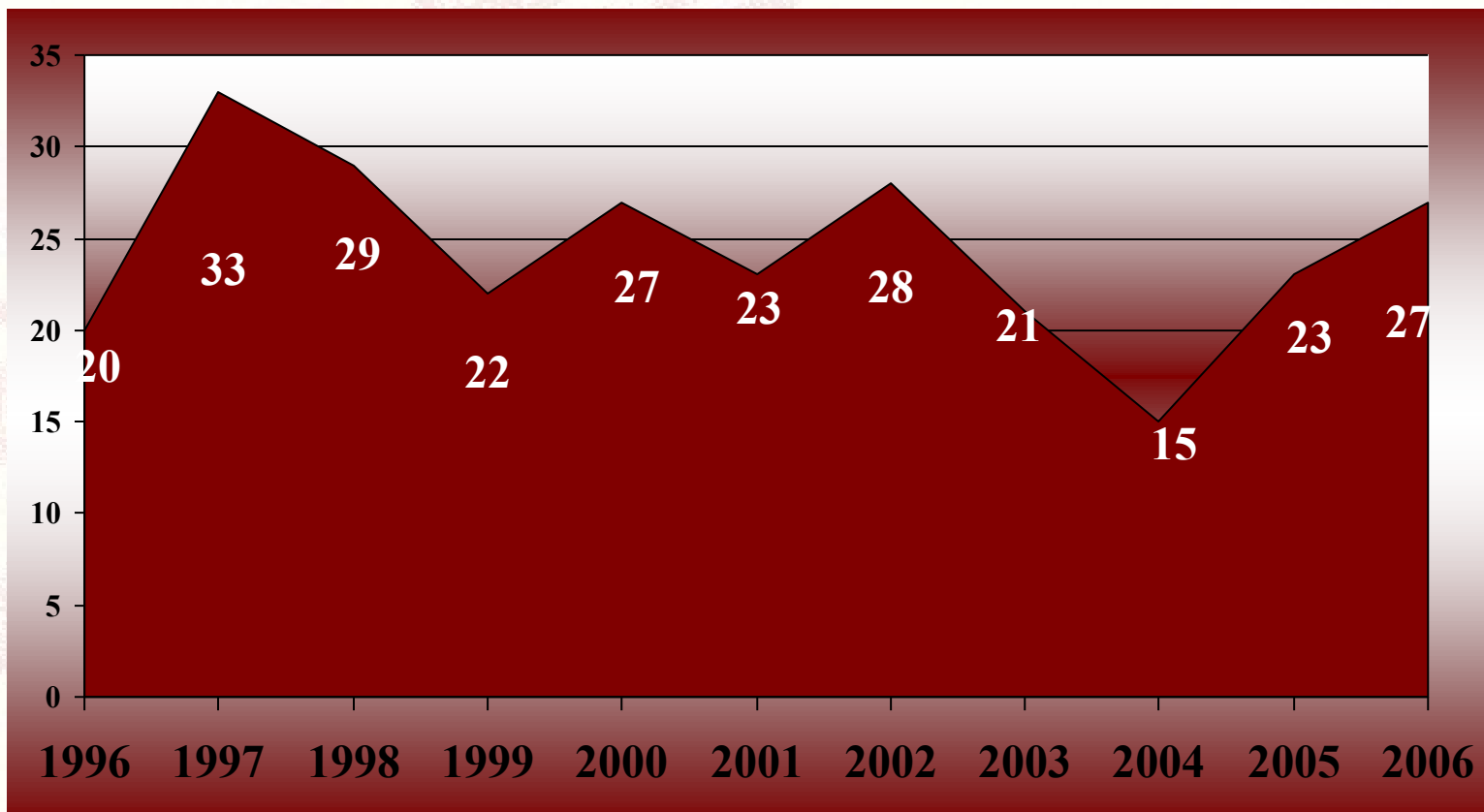


# TENDENCIA PERIODO 1996-2006 NOVILLADAS CON PICADORES



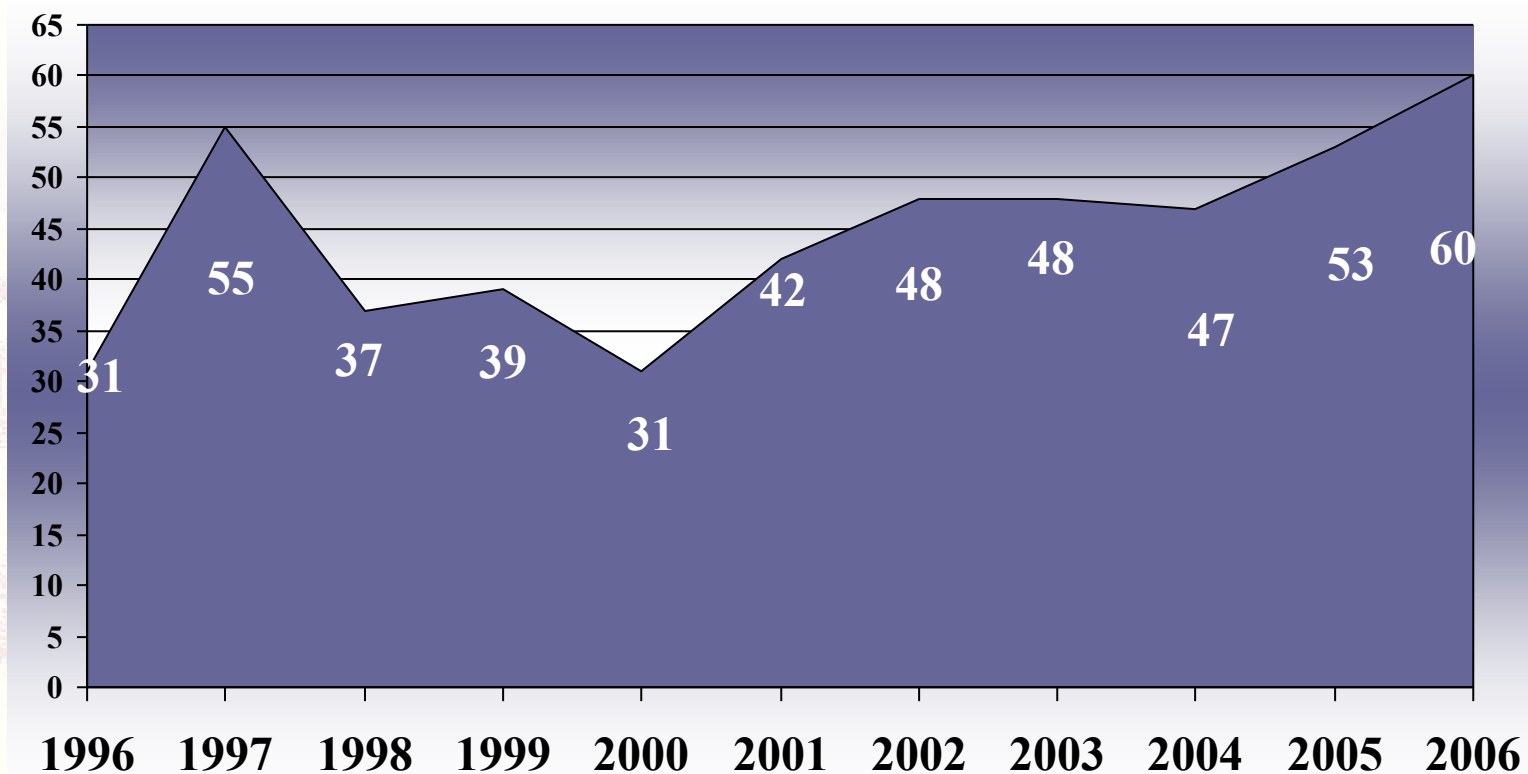
# TENDENCIA PERIODO 1996-2006

## NOVILLADAS SIN PICADORES



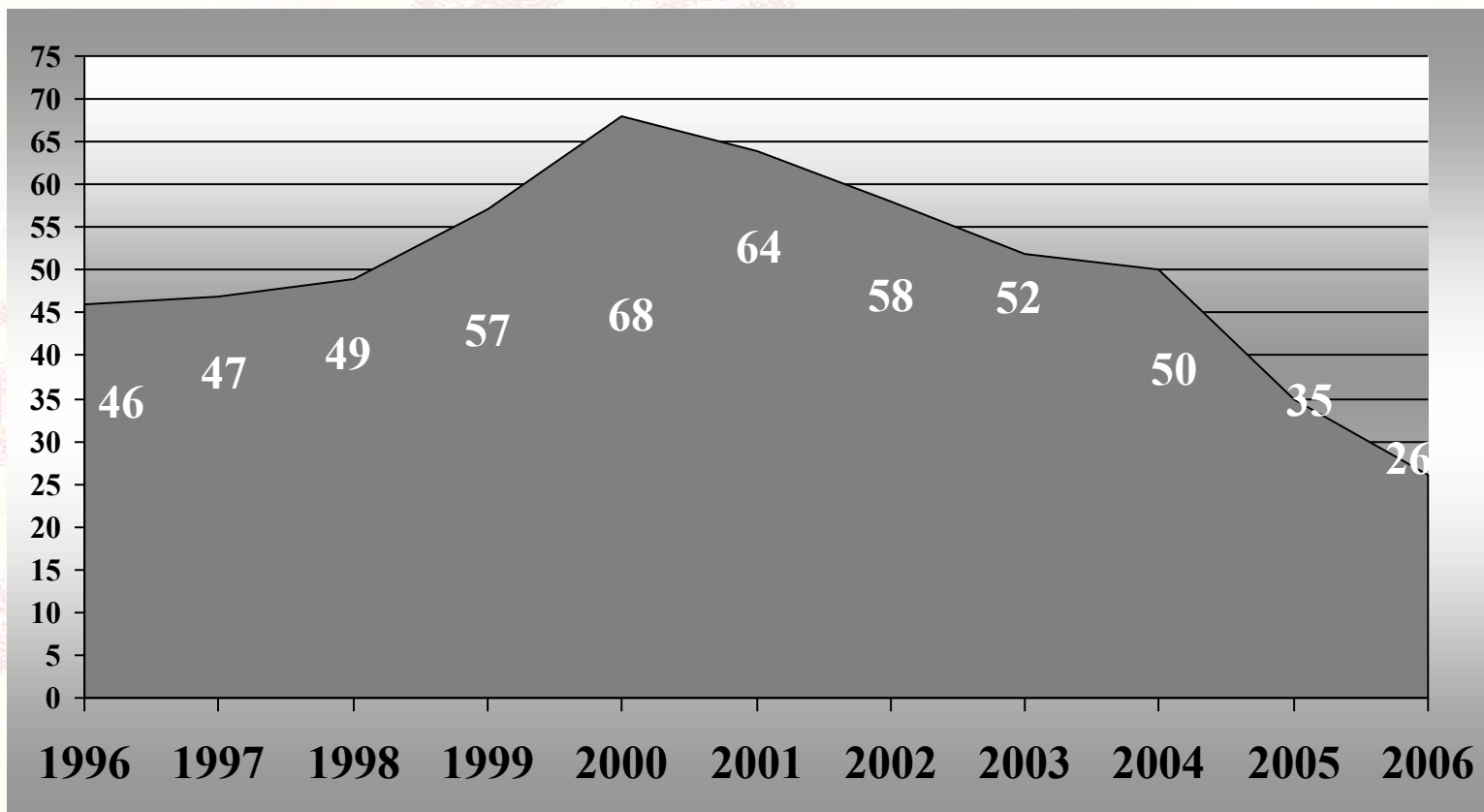
# TENDENCIA PERIODO 1996-2006

## REJONEO



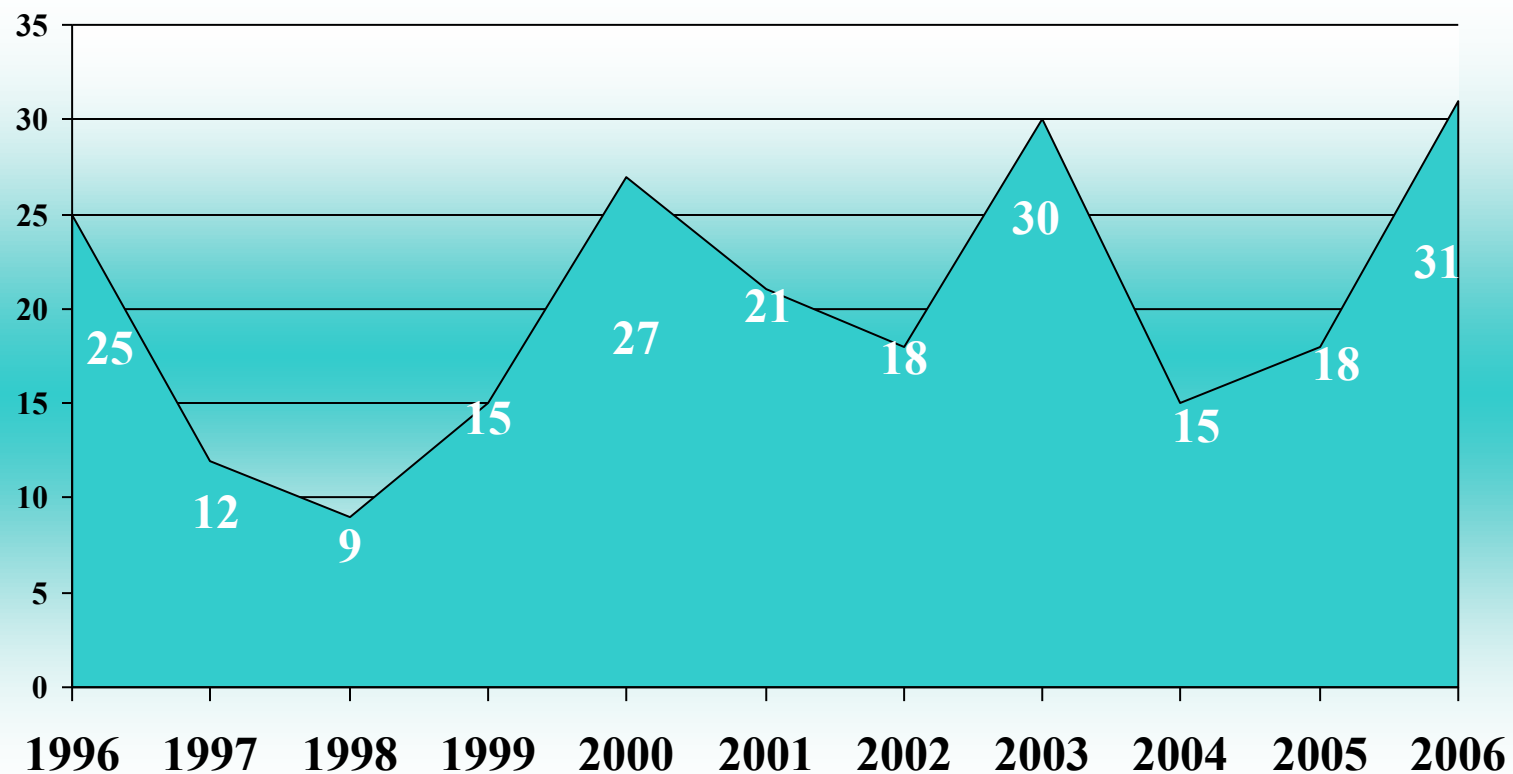
# TENDENCIA PERIODO 1996-2006

## BECERRADAS



# TENDENCIA PERIODO 1996-2006

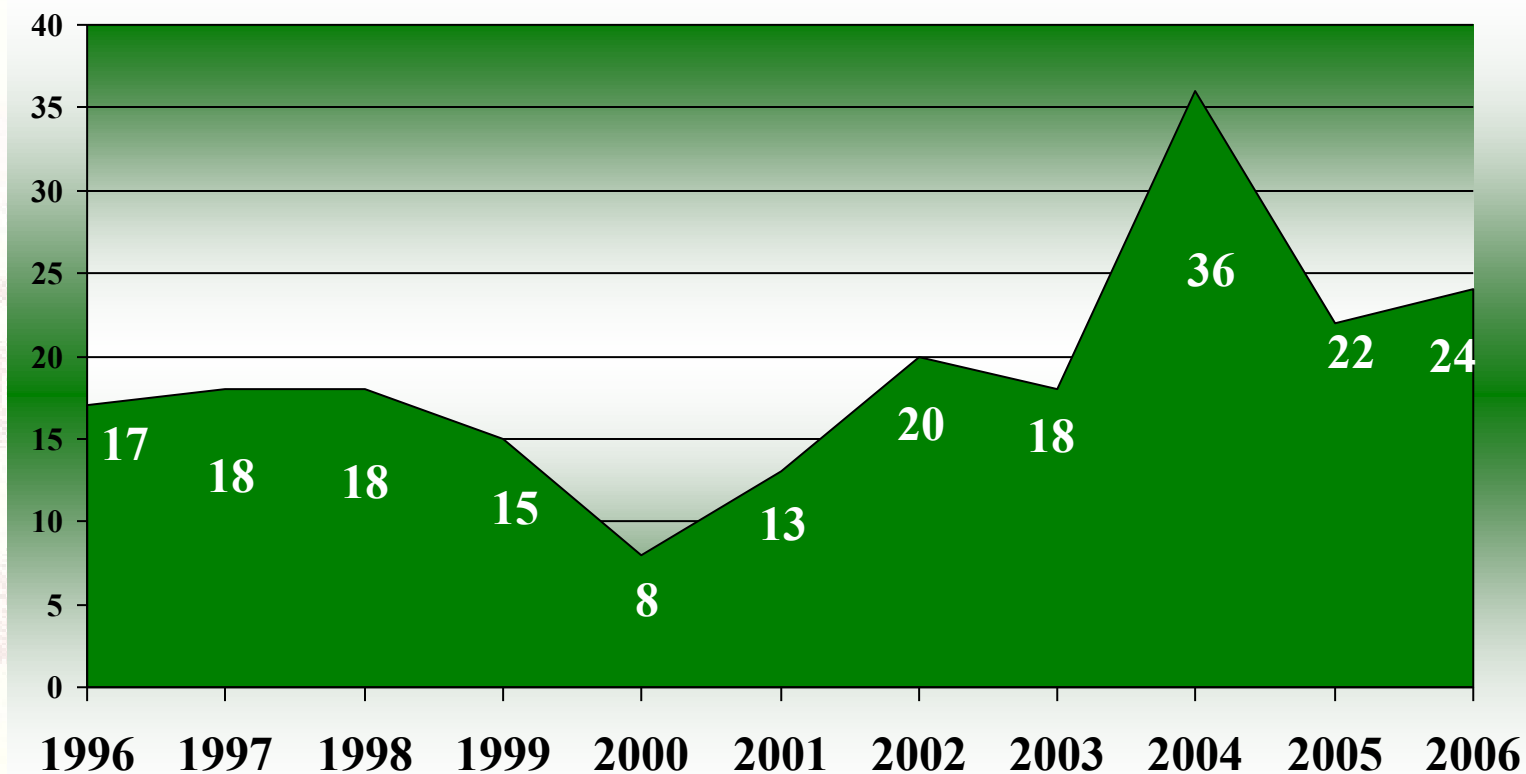
## FESTIVALES





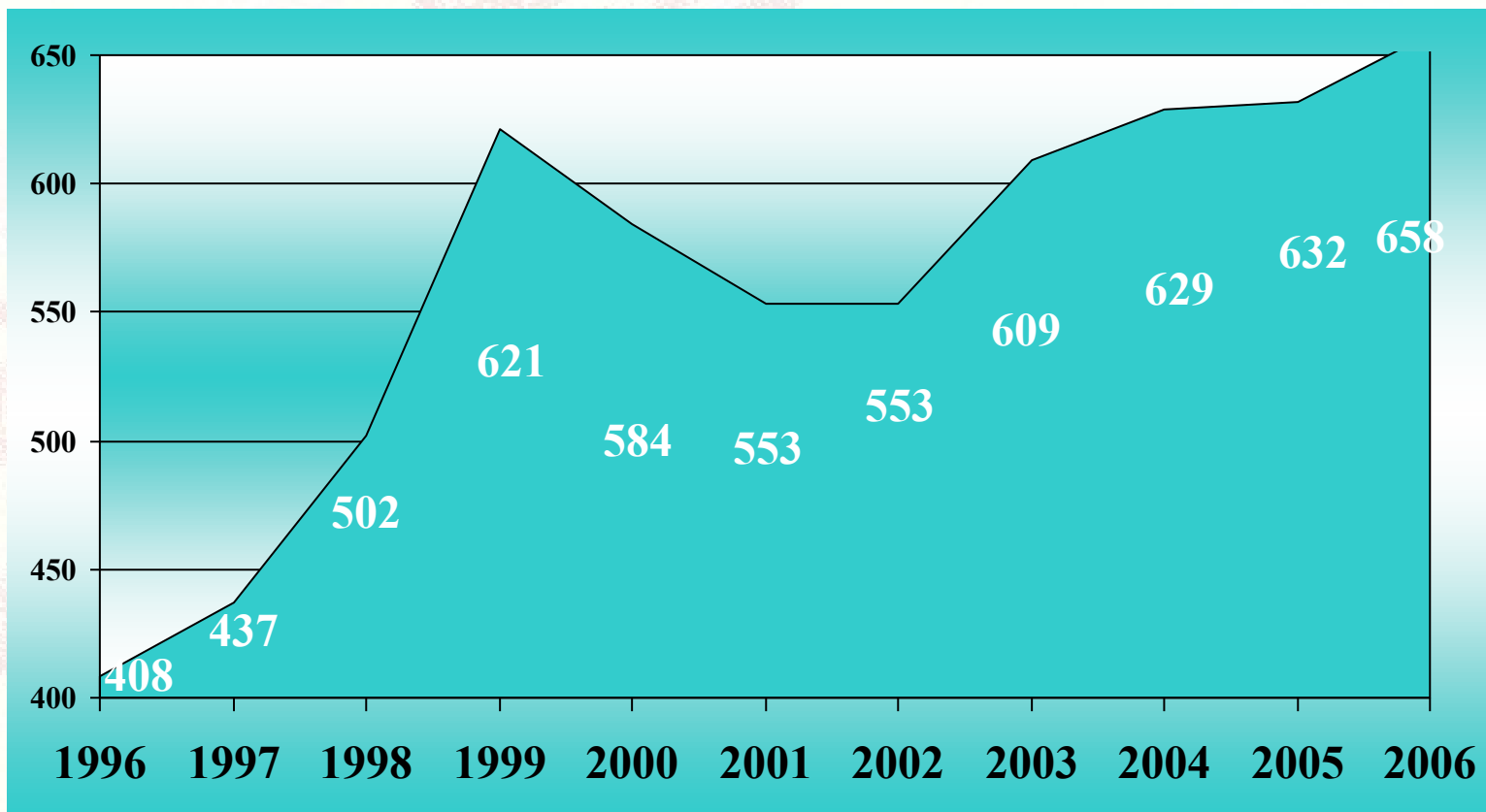
# TENDENCIA PERIODO 1996-2006

## TOREO CÓMICO



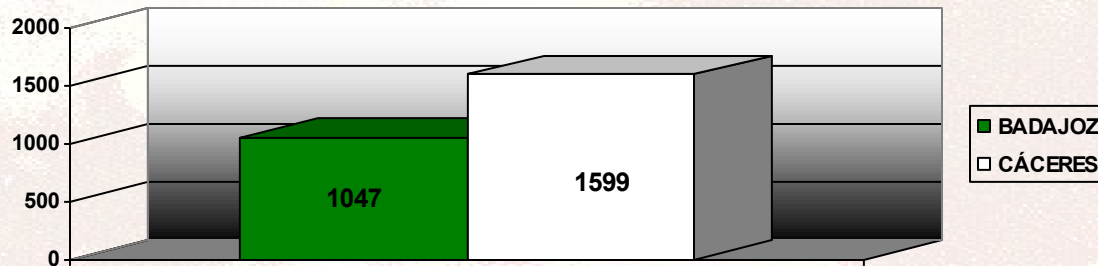
# TENDENCIA PERIODO 1996-2006

## FESTEJOS POPULARES

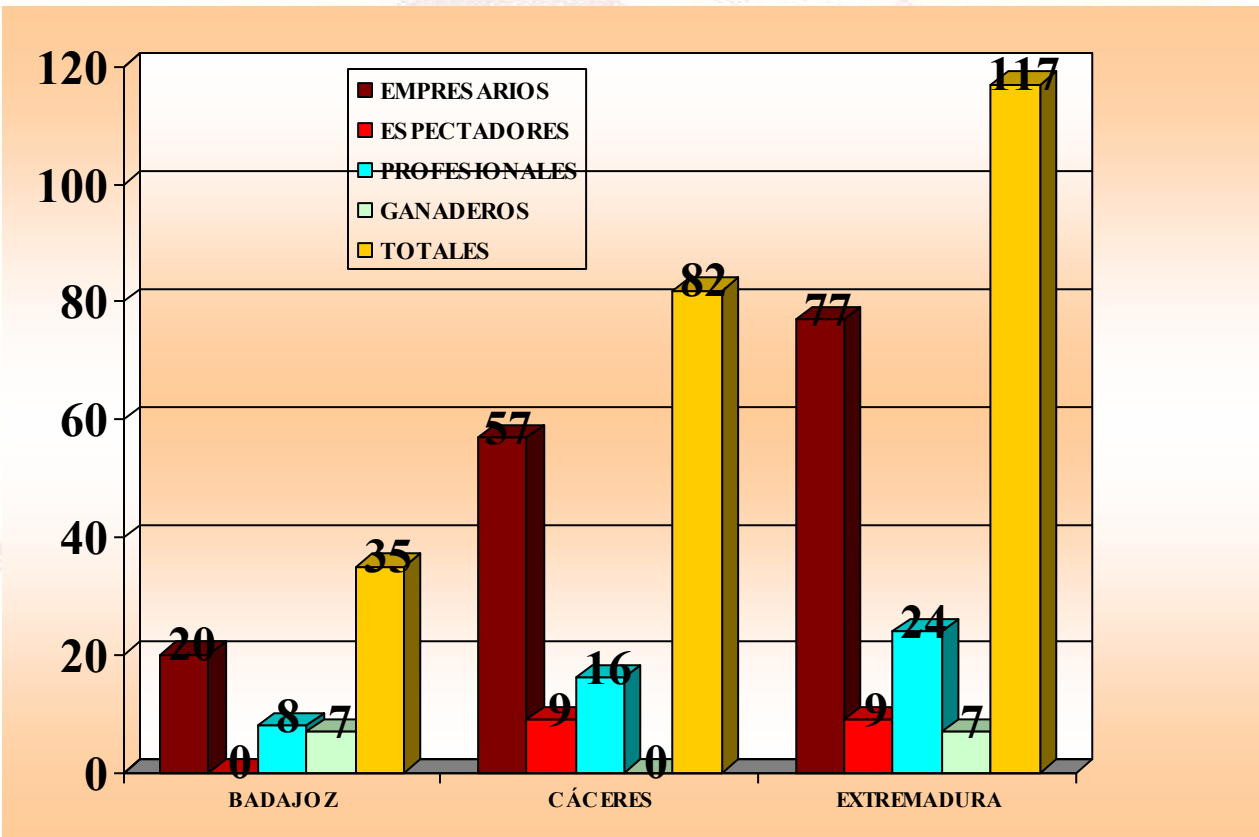


# Nº DE RESES LIDIADAS

|              | BADAJ OZ | CÁCERES | EXTREMADURA |
|--------------|----------|---------|-------------|
| Nº. DE RESES | 1.047    | 1.599   | 2.646       |

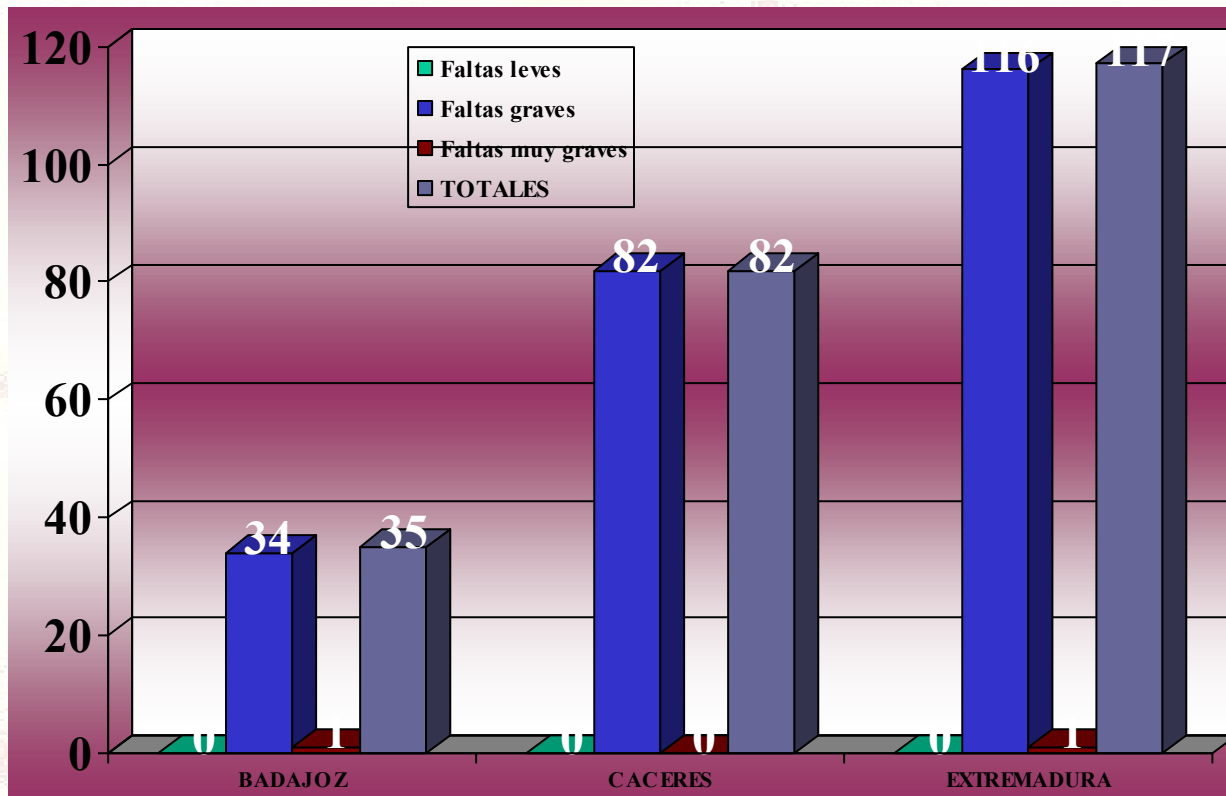


# SANCIONES IMPUESTAS POR TIPO DE DENUNCIADOS



|               | BADAJOZ | CÁCERES | EXTREMADURA |
|---------------|---------|---------|-------------|
| EMPRESARIOS   | 20      | 57      | 77          |
| ESPECTADORES  | 0       | 9       | 9           |
| PROFESIONALES | 8       | 16      | 24          |
| GANADEROS     | 7       | 0       | 7           |
| TOTALES       | 35      | 82      | 117         |

# SANCIONES IMPUESTAS POR TIPO DE INFRACCIÓN



|                   | BADAJOZ   | CACERES   | EXTREMADURA |
|-------------------|-----------|-----------|-------------|
| Faltas leves      | 0         | 0         | 0           |
| Faltas graves     | 34        | 82        | 116         |
| Faltas muy graves | 1         | 0         | 1           |
| <b>TOTALES</b>    | <b>35</b> | <b>82</b> | <b>117</b>  |